



# APOLLO-D9™

GETTING STARTED PACK



[diagnostics.snapon.com/apollo-d9](https://diagnostics.snapon.com/apollo-d9)



# APOLLO-D9™ Feature Spotlight

**Intelligent Diagnostics** - Access code-specific repair information, functional tests, OEM bulletins and Smart Data all in one menu.

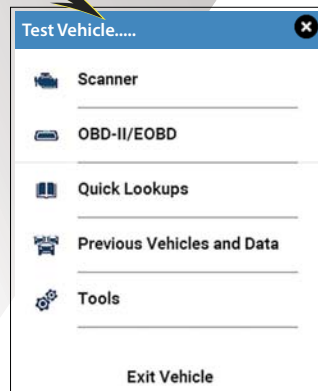
**Quick-Access Menu** - Quickly jump between related functions (i.e. Scanner to Previous Vehicles and Data). To access, select the **Home** icon from a function screen after identifying the vehicle.

**Vehicle Voltage Readout** - View the vehicle's Data Link Connector (DLC) voltage in the title bar.

**Ethernet Ready\*** - Connect and communicate with Ethernet equipped vehicles.

**Instant ID (Auto VIN)\*** - Vehicle identification occurs automatically when the data cable is connected with the key on.

**Wireless Software Upgrades** - Wi-Fi connection is all it takes to get the latest vehicle coverage. Subscription based software upgrades are delivered directly to your tool. *\* Supported vehicles only.*



## Snap-on® Cloud Wi-Fi Required

Automatically transfer code scans, ADAS recalibration reports, and screenshots to the Snap-on Cloud. Use your mobile device to print and share the files.

### Getting Set Up

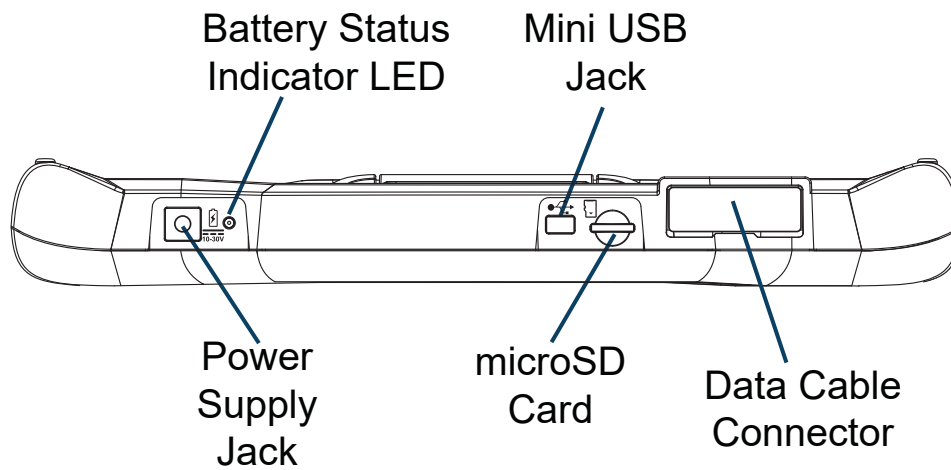
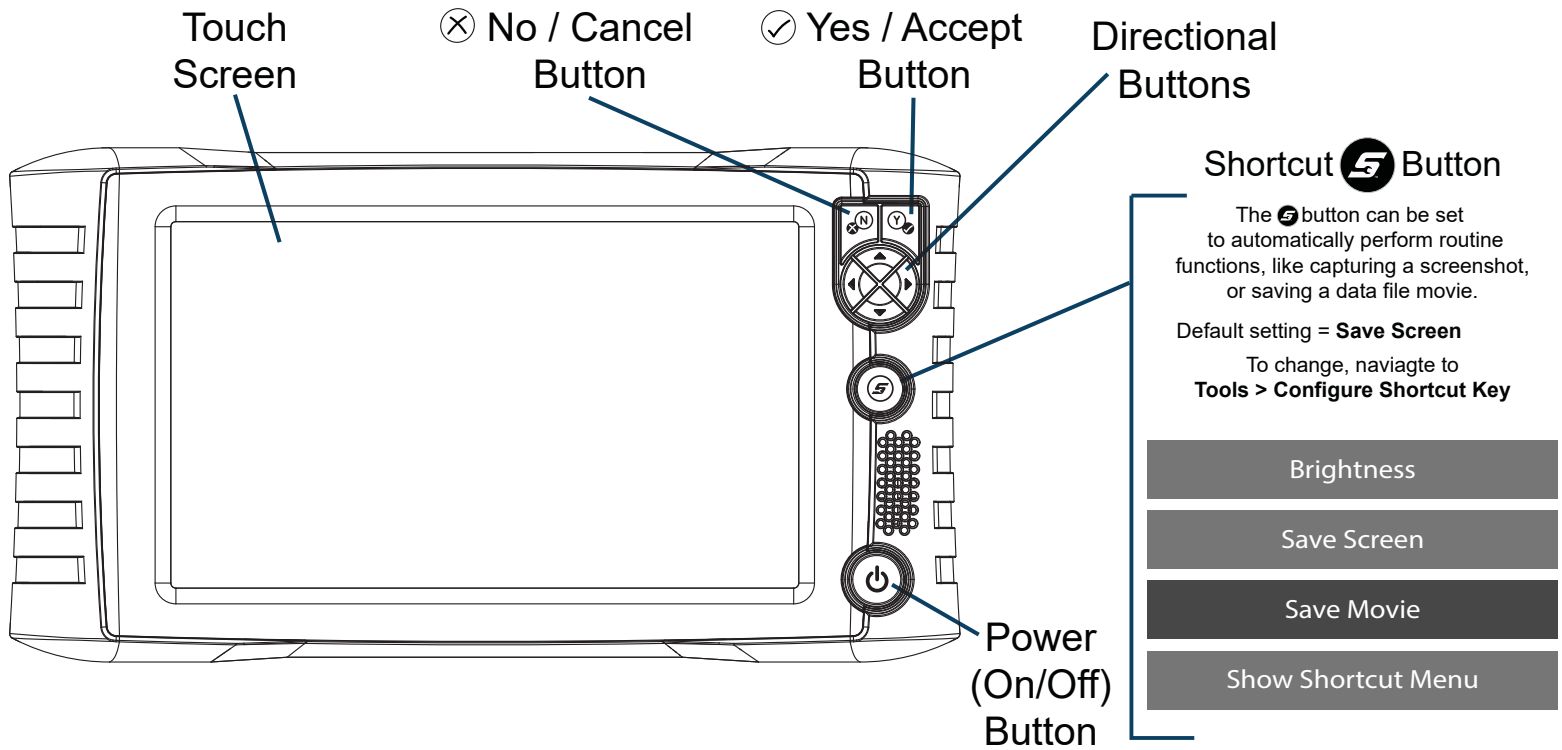
1. Connect the tool to a Wi-Fi network.
2. Record the **Serial Number**, **PIN** and **Code** from the Get Connected screen (**Tools > Get Connected**).
3. Using a mobile device or PC, visit <https://ALTUSDRIVE.com> and select **Create Individual Account**.

**Note** - If you already have a SureTrack account, use your credentials to login and "Add a Device", to link this tool to your account.

4. Enter the required information and create a **Username** and **Password**, then select **Create**.
5. At the "Success" confirmation screen, select **Done**.
6. Log in using your **Username** and **Password**.
7. Answer the security questions, then select **Submit**.
8. From Technician Profile Manager select the **Device Management** tab.
9. Select **Add Device**, enter your **Serial Number**, **PIN**, **Code**, and **Device Name**.
10. Log out of **Profile Manager**, then select the **ALTUS Home Page** browser tab to get started.

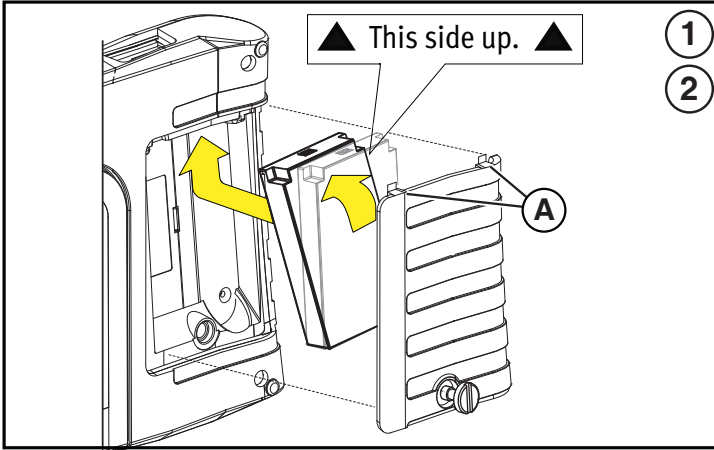
**Note** - From the Snap-on Cloud you can also access ShopStream Connect™ (SSC). SSC allows you to transfer and manage scanner and scope data files using your personal computer.

# Feature Locations and Button



Connect the AC power supply to charge the battery.

# Getting Started



1. Remove the battery pack cover, and install the battery pack (as shown) with the arrows facing up. Tilt the top of the battery in to align the tabs, then down to install.

2. Install the battery pack cover, aligning the tabs (A). Then tighten the screws.

**Note** - Do not overtighten the screws.



3. Connect the AC power supply.

4. Press the **Power**  button.

**\*\*\*IMPORTANT\*\*\***  
Turn Wi-Fi on to receive software updates, use Intelligent Diagnostics, and Quick Lookups.



5. To turn Wi-Fi on:

a. From the Home screen, select **Tools > Settings > Configure Wi-Fi**.

b. Turn **Wi-Fi**  on.

c. **Connect** to a wireless network.

6. To scan a vehicle:

a. Turn ignition on.

b. Connect the Data Cable to the vehicle and tool.

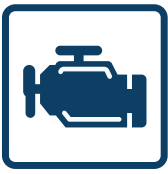
c. Follow Instant ID prompts, or select **Scanner** and identify the vehicle.

d. Follow the prompts to select a system and test.



**Tips:**

- Connecting to the vehicle's DLC, powers the tool.
- Vehicle DLC voltage is displayed on the title bar.



## Scanner

**Scanner** makes vehicle communication easy, by providing full scanning functionality including these features and more!

**Intelligent Diagnostics** -  Quickly find code-specific diagnostic information

**Code Scan** - Scan multiple systems in a single touch

**Data Graphing** - View multiple PID graphs at once for data comparison analysis

**Tests/Resets** - Perform functional component tests, and adaptive relearns

### Scanner Basics

1. Turn the vehicle ignition switch on.
2. Connect the Data Cable to the vehicle and diagnostic tool.
3. Confirm the vehicle as prompted by Instant ID, or select **Scanner** from the Home screen to identify the vehicle.
4. Select a system (e.g. Code Scan, Engine, Transmission, Body, etc.).
5. Select a function/test (e.g. Codes Menu, Data Display, Functional Tests, etc.).

### Demonstration

The built-in demonstration program includes a slide show Introduction to Intelligent Diagnostics, and allows you to interactively explore Scanner functions without actually connecting to a vehicle. The interactive demonstration allows you to navigate through Scanner operations, including vehicle identification, system selection, Code Scan, PID graphs, Intelligent Diagnostics and more!


1. Select **Scanner**, from the Home screen.
2. Select **Demonstration**, from the vehicle make menu.
3. Select **Chevrolet > 2016 > Tahoe (4WD) Demo > Tahoe 5.3 V8 (L83)**.
4. Select **OK**, to confirm the vehicle, then select **Continue** (demo mode confirmation message).
5. Select **Engine > Codes Menu > Display Codes > DTC Display**, to display the code results list.

From the code results list there are two demonstration options:

- a - Continue interactive demo, see [Intelligent Diagnostics Demonstration](#).
- b - View slide show, see [Introduction to Intelligent Diagnostics](#).


## Introduction to Intelligent Diagnostics

The Introduction to Intelligent Diagnostics slide show helps you get familiar with the basic menus and code-specific features.

Select  to start the demo, and use the **Forward (>)** and **Back (<)** icons to view the slides.

Select **"X"** to exit and return to the codes results list screen.

# Intelligent Diagnostics Demonstration

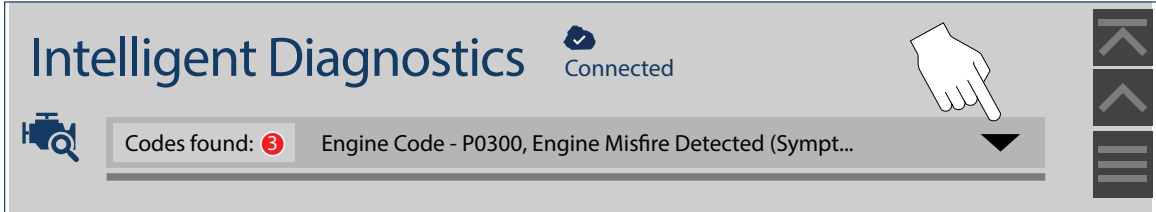
1. Select a code from the code results list.
2. Select  to display the Intelligent Diagnostics multi-card menu.



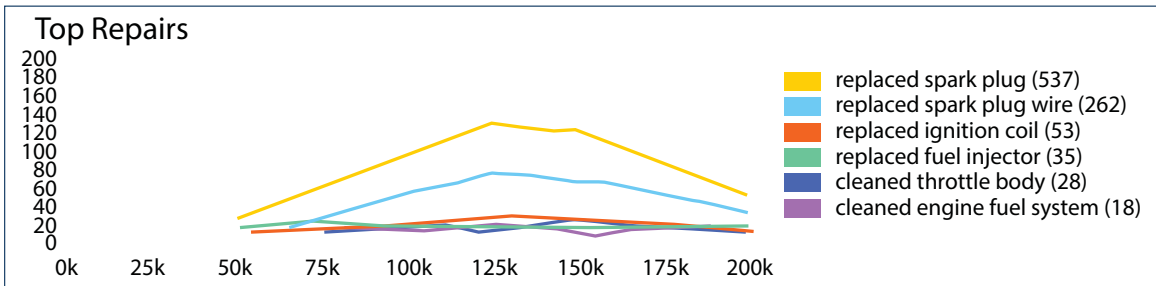
**Wi-Fi required**  
to use

Intelligent Diagnostics.  
Not required for Demo.

Intelligent Diagnostics gives you access to code-specific repair information, tests, OEM bulletins and Smart Data all in one menu. Use the dropdown menu to change the active code.



**Top Repairs Graph** - Displays the most likely repairs and probable causes for the selected code.



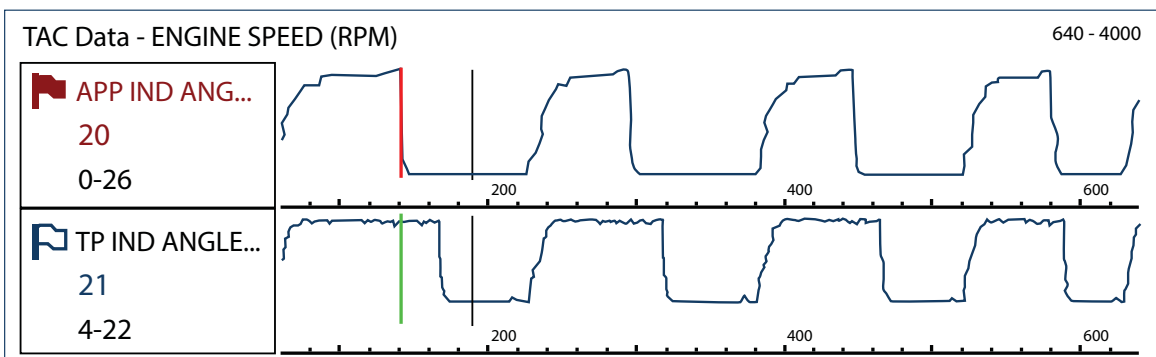
## Technical Service Bulletins (TSB's)

Displays TSB's, Campaigns and Recalls related to the selected code.



## Smart Data

Displays a custom list of PIDs related to the selected code. Smart Data uses "real-world" data to preset the PIDs upper and lower trigger values (any PID with a flag has been preset and armed). Any PID that exceeds it's limits will change it's flag color from blue to red, indicating a potential issue.





## Functional Tests & Reset Procedures

Displays code-specific list of bi-directional tests that can be used to verify component or system operation during troubleshooting.



## SureTrack® - Top Real Fix

The Top Real Fix for the code selected is displayed on the multi-card menu for quick reference. Real Fixes have been collected from actual shop repair orders.



## Real Fixes

Displays repair procedures, tests and tips related to the selected code.



## Troubleshooter

Displays troubleshooter tips related to the selected code, that have been collected from industry professionals.



## Quick Lookups



Quick Lookups makes finding valuable OEM service information and functional scanner tests easy!

### Oil Specs and Resets:

Lookup engine oil specifications and reset the service interval.

- Capacity Information and Specifications
- Scanner Reset of Service Interval
- OEM Reset Procedures and Information

### Tire and Wheel Service:

Perform TPMS functional tests and indicator resets. View reset/repair procedures and tire fitment specifications.

- Reset Procedures and Information
- Repair Procedures
- Scanner Reset of Service Indicator
- Tire Fitment Specifications



## Training and Support

Find information about Training and Support here.





## OBD-II / EOBD

Quickly access global OBD-II/EOBD codes, tests, and data without having to identify the vehicle.

### Menu Options:

- **OBD Direct** - access OBD-II/EOBD service modes (e.g. \$01 to \$0A), allowing you to view current diagnostic trouble codes, parameter data, freeze frame information, O2 sensor monitoring test results, check calibration numbers, and more!
- **OBD-II Health Check** - quickly check or clear diagnostic trouble codes, check readiness monitor status, and MIL status.



## Previous Vehicles and Data

Save setup time when re-testing a vehicle, and review your saved files.

### Menu Options:

- **Vehicle History** - lists the last twenty-five vehicles selected.
- **Saved Data** - lists all saved data files, including screen images.
- **Delete Saved Data** - permanently erases saved files from memory.



## Tools

Easily change settings to your preferences, and transfer saved data files to your PC.

### Menu Options:

- **Connect-to-PC** - transfer saved data files to your PC using a USB cable and ShopStream Connect™.
- **Get Connected** - displays the diagnostic tool serial number, PIN and Code needed for Snap-on Cloud registration.
- **Configure Shortcut Key** - change the function of the Shortcut button to one of five options.
- **System Information** - displays software version, serial number and system information.
- **Software Updates** - check for and download software updates.
- **Settings** - adjust display and unit measurement settings to your preferences.



# Customer Support

Phone: (800) 424-7226

Email: [diagnostics\\_support@snapon.com](mailto:diagnostics_support@snapon.com)

Website: [diagnostics.snapon.com](http://diagnostics.snapon.com)



## Safety Information / User Manual

Before using this diagnostic tool, read and understand the *Important Safety Information* (included), and the *User Manual* (available online). Both documents are available at: [diagnostics.snapon.com/usermanuals](http://diagnostics.snapon.com/usermanuals)

## Warranty Activation and Extension

To activate your warranty, and ensure you have access to the latest software upgrades, register your diagnostic tool today.

**U.S. Customers:** <https://registration.snapon.com/products/us>

**Canadian Customers:** <https://registration.snapon.com/products/ca>

Extended warranty protection is available for an additional 12, 24 or 36 months. Contact your local Snap-on representative for information.

## Software Subscription Program

Snap-on is continually enhancing our diagnostic software to provide our customers with the latest information available, not only for new vehicles but for older vehicles as well. As revisions become available, we offer them in each new software release.

The Snap-on Software Subscription Program is the no-hassle, low-cost way to automatically get the latest codes, data, tests and exclusive coverage for thousands of new vehicle systems. To find out more, visit: [diagnostics.snapon.com/theprogram](http://diagnostics.snapon.com/theprogram)

## End User License Agreement / Patent Information

Use of the device acknowledges your acceptance of the End User License Agreement. The Snap-on Incorporated Software End User License Agreement is available at: <https://eula.snapon.com/diagnostics>

For a listing of Snap-on products that are protected by patents in the United States and elsewhere, visit: <https://patents.snapon.com>

# Important Information

Before using this diagnostic tool, read and understand:

- The *Important Safety Information* - included in this kit
- The APOLLO-D9™ *User Manual* - available online at:  
[diagnostics.snapon.com/usermanuals](http://diagnostics.snapon.com/usermanuals)

## **Training** *Solutions*® Online Training Videos

To maximize your productivity, Snap-on Training Solutions offers in-depth, multi-level training at no charge, available 24/7 at: [diagnostics.snapon.com/trainingsolutions](http://diagnostics.snapon.com/trainingsolutions)

## Get the most from your new diagnostic tool.

The latest software upgrades are as close as your Snap-on Representative's van, or for more information visit: [diagnostics.snapon.com](http://diagnostics.snapon.com)

Snap-on is a trademark, registered in the United States and other countries, of Snap-on Incorporated. All other marks are trademarks or registered trademarks of their respective holders. ©2020 Snap-on Incorporated. All pictures and illustrations shown are for reference purposes only. All information including specifications herein are subject to change without notice. ZEESC335A1 Rev. A

# APOLLO-D9™

The Snap-on logo is displayed in a stylized, italicized font with a metallic, 3D effect. It is enclosed within a thin white rectangular border.