



VANTAGE® Legend

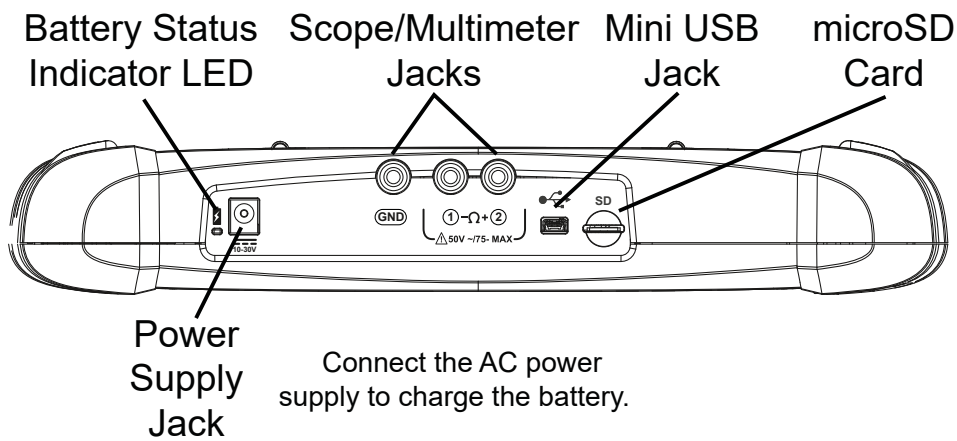
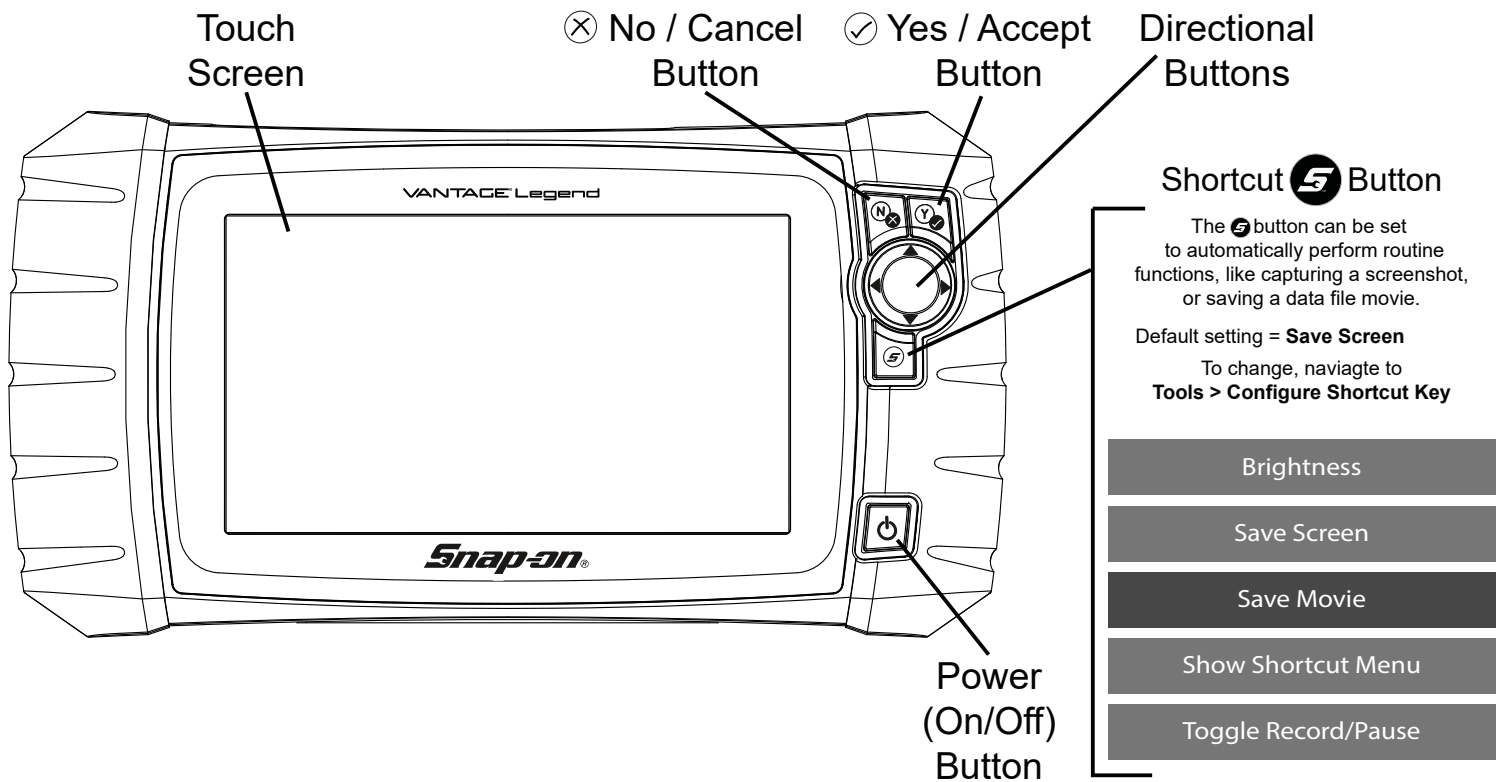
GETTING STARTED PACK



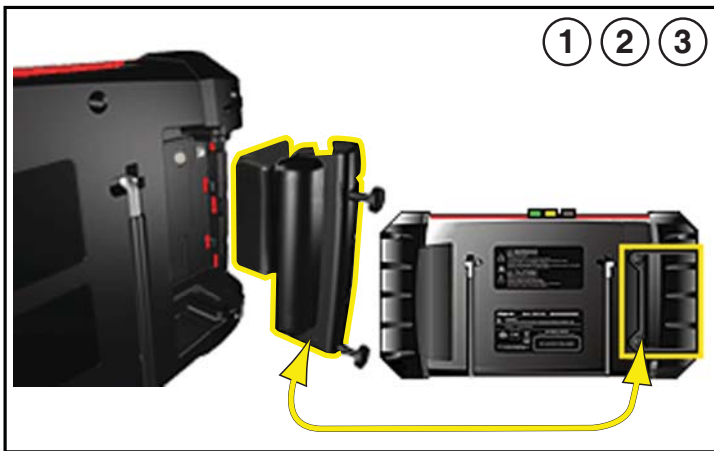
diagnostics.snapon.com/vantagelegend



Features and Button



GETTING STARTED

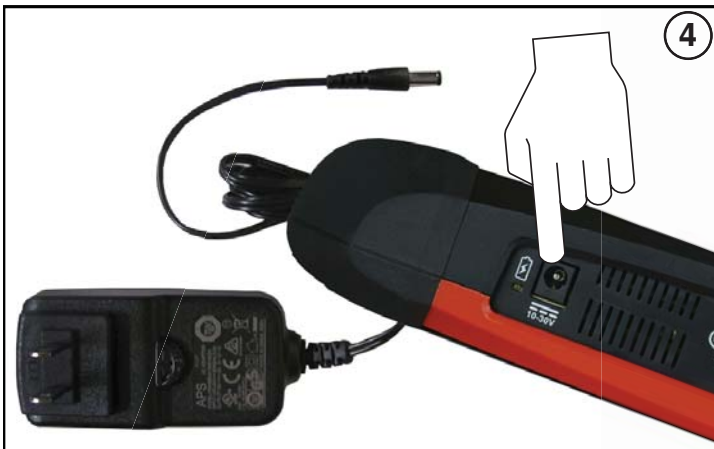


1. Loosen the battery cover screws, then remove the battery pack cover.

2. Insert the battery pack into position, then slide it up to lock it into place.

3. Install the battery pack cover, then tighten the screws.

Note - Do not overtighten the screws.



4. Connect the AC power supply, to charge the battery.



5. Press the Power  button.

6. Select a function:

Guided Component Tests:

a. Follow the prompts to identify the vehicle.

b. Choose the applicable test.

c. Follow the prompts to connect the test leads and perform the test.

Scope Multimeter:

a. Follow the prompts to choose Lab Scope, Graphing Multimeter, or Digital Multimeter.

b. Choose the applicable test setup function, then connect the test leads.





Guided Component Tests


Perform vehicle specific component tests, using guided instructions to help you verify component integrity and validate repairs. Vehicle information may include:

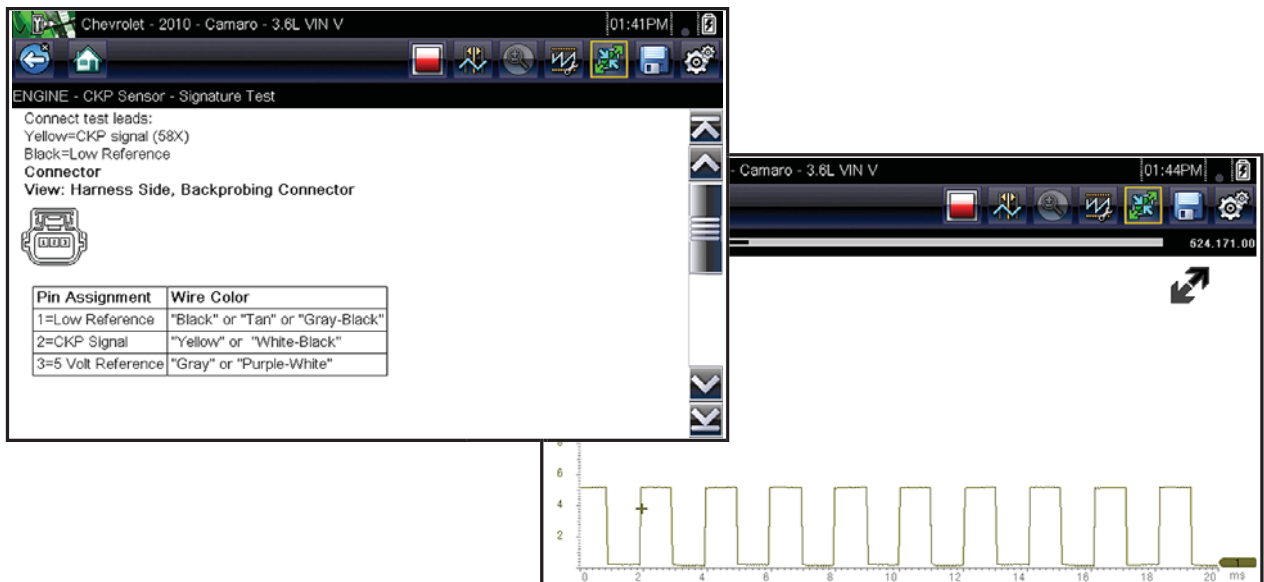
- **Component testing instructions and locations**
- **Waveform examples**
- **Illustrated connectors with pinouts**
- **Diagnostic references**

CKP Sensor Signal Test (Example)

1. Select **Guided Component Tests** from the Home screen.
2. Select **Chevrolet > 2010 > Camaro > 3.6L VIN V**
3. Select **OK**, then **Engine > CKP Sensor > Signature Test**

A pre-configured test screen appears with test lead connection instructions, and an example of a known good waveform.

Select  to toggle between guided instructions and the test screen.



Training and Classes

Training and Classes includes a wide collection of common (non-vehicle specific) reference information and pre-configured tests (**Power User Tests**), such as measuring fuel pump current ramp, and monitoring CKP and CMP signals simultaneously.

Also included in the (**How To Guide**) are basic component operation and theory information, testing procedures, tips, definitions, illustrations, diagnostic tool feature descriptions and accessory information.

To access Training and Classes:

1. Select **Guided Component Tests** from the Home screen.
2. Select **Training and Classes** from the Vehicle Make menu, then choose a menu option (e.g. Power User Tests, How To Guide, or Features and Benefits).



Scope Multimeter

Measure waveforms, test circuits and components using the built-in:

- **2-Channel Lab Scope**
- **Graphing Multimeter (GMM)**
- **Digital Multimeter (DMM)**

Capture waveforms and play them back. Use built-in features like zoom, cursors and peak detect to help you find glitches not easily seen live.

Pre-configured tests include these and more!

- **Volts DC**
- **Volts AC RMS**
- **Ohms**
- **Diode Continuity**
- **Pressure and Vacuum**
- **Low Amps (20,40 and 60)**
- **Duty Cycle**
- **Injector Pulse Width**
- **Pulse Width**
- **Frequency**

Shielded leads, alligator clips and probes included.

Contact your Snap-on Representative about optional accessories (e.g. pressure/vacuum transducers, low amp probe and more).



Previous Vehicles and Data

Save setup time when re-testing a vehicle, and review your saved files.

- **Vehicle History** - lists the last twenty-five vehicles selected.
- **View Saved Data** - lists saved data files, including screen images.
- **Delete Saved Data** - permanently erases saved files from memory.



Tools

Easily change settings to your preferences, and transfer saved data files to your PC.

Menu Options:

- **Connect-to-PC** - transfer saved data files to your PC using a USB cable and ShopStream Connect™.
- **Configure Shortcut Button** - change the function of the Shortcut button to one of five options.
- **Settings** - adjust display and unit measurement settings to your preferences.
- **System Information** - displays software version, serial number and system information.

Print Data Files, Download Software Updates and more using **ShopStream** **CONNECT™**

ShopStream Connect (SSC) is a companion PC application that gives you the ability to connect your diagnostic tool to your PC.

1. Get started by downloading and installing the SSC application onto your PC.

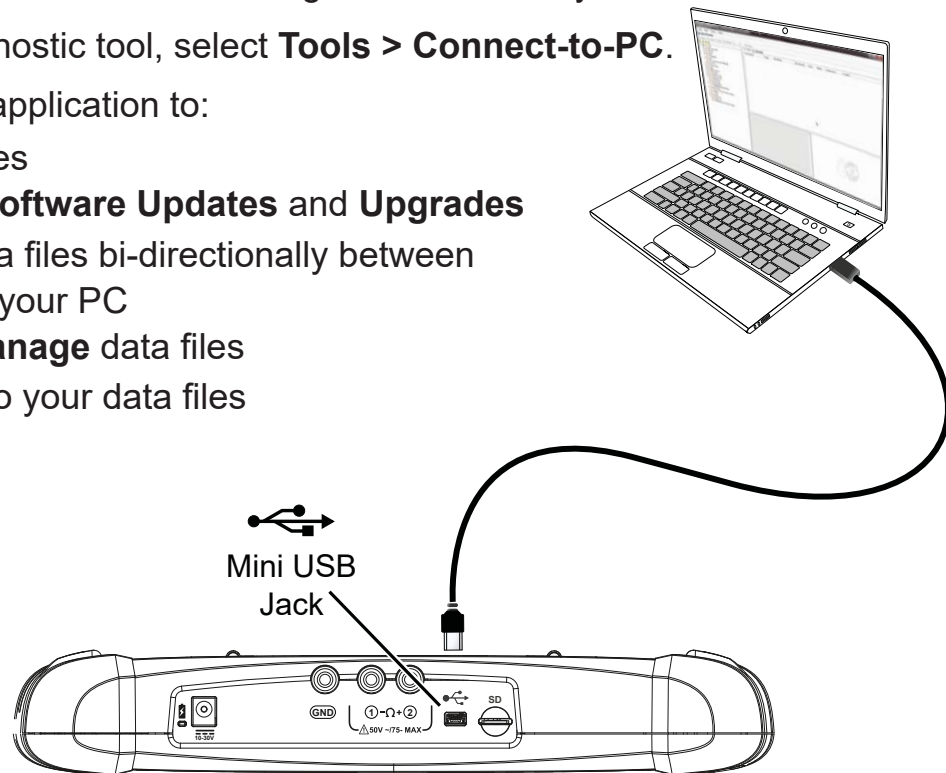
Download SSC from: diagnostics.snapon.com/ssc

2. Connect the USB cable to the diagnostic tool, and your PC.

3. From the diagnostic tool, select **Tools > Connect-to-PC**.

4. Use the SSC application to:

- **Print** data files
- **Download Software Updates and Upgrades**
- **Transfer** data files bi-directionally between the tool and your PC
- **Save** and **Manage** data files
- **Add Notes** to your data files



Kit Contents

The following are included with your VANTAGE Legend kit:

- VANTAGE Legend Diagnostic Tool and Battery Pack
- Mini USB Cable
- Scope/Multimeter Leads
- AC Power Supply
- Getting Started Pack
- Soft Carrying Case

Contact your Snap-on Representative about accessories and extras, including these and more!

- Screen Protectors
- Low Amp Current Probe
- Pressure Transducers

Customer Support

Phone: (800) 424-7226

Email: diagnostics_support@snapon.com

Website: diagnostics.snapon.com/faq

Safety Information

Before using this diagnostic tool, read and understand the *Important Safety Information* document provided within this kit. The *Important Safety Information* document is also available at: diagnostics.snapon.com/usermanuals



User Manual

Download the user manual from: diagnostics.snapon.com/usermanuals

Warranty Activation and Extension

To activate your warranty, and ensure you have access to the latest software upgrades, register your diagnostic tool today.

U.S. Customers: store.snapon.com/ProductRegistration.aspx

Canadian Customers: snapon.com/productregistration

Extended warranty protection is available for an additional 12, 24 or 36 months. Contact your local Snap-on Representative for information.

Software Subscription Program

Snap-on is continually enhancing our diagnostic software to provide our customers with the latest information available, not only for new vehicles but for older vehicles as well.

As revisions become available, we offer them in each new software release.

The Snap-on Software Subscription Program is the no-hassle, low-cost way to automatically get the latest codes, data, tests and exclusive coverage for thousands of new vehicle systems. To find out more, visit: diagnostics.snapon.com/theprogram

Important Information

Before using this diagnostic tool, read and understand:

- The *Important Safety Information* - included in this kit
- The VANTAGE® Legend *User Manual* - available online at:
diagnostics.snapon.com/usermanuals

Get the most from your new diagnostic tool.

The latest software upgrades are as close as your Snap-on Representative's van, or for more information visit: diagnostics.snapon.com/software

Training Solutions®

To maximize your productivity, Snap-on Training Solutions offers in-depth, multi-level training at no charge, available 24/7 at: diagnostics.snapon.com/trainingsolutions

Snap-on is a trademark, registered in the United States and other countries, of Snap-on Incorporated. All other marks are trademarks or registered trademarks of their respective holders. ©2019 Snap-on Incorporated. All pictures and illustrations shown are for reference purposes only. All information including specifications herein are subject to change without notice. ZEETM345A1 Rev. A

VANTAGE® Legend

The Snap-on logo is located in the bottom right corner of the page. It features the word "Snap-on" in a stylized, italicized font with a metallic, 3D effect. The letters are white with black outlines and shadows, giving it a sense of depth and texture. The logo is set against a red background.