



VERUS[®] PRO Code Scan with Report (scan/view/print)

Selecting **Code Scan** starts an active scan of vehicle control modules. The scan results are configured into a printable Code Scan Report.

Use Code Scan to Scan Systems¹

Once you have connected and identified a vehicle through Scanner, select **Code Scan** (*Figure 1*) from the Vehicle System menu to start an active scan of vehicle control modules.

View Code Scan Results

The total number of systems analyzed is actively displayed at the top of the screen (*Figure 2*).

For more information about Code Scan, refer to your diagnostic tool user manual at: diagnostics.snapon.co.uk/usermanuals

Printing the Code Scan Report

Select **Print** from the toolbar (*Figure 3*) to print the Code Scan Report (*Figure 4*).

For more information on printing the report, see the next page.

Figure 1

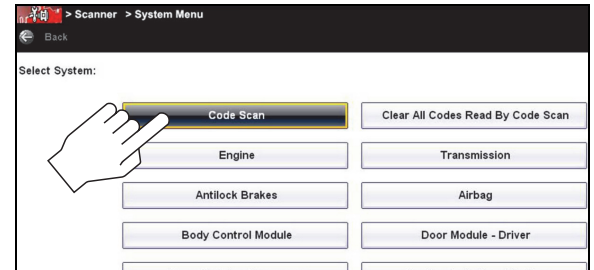


Figure 2

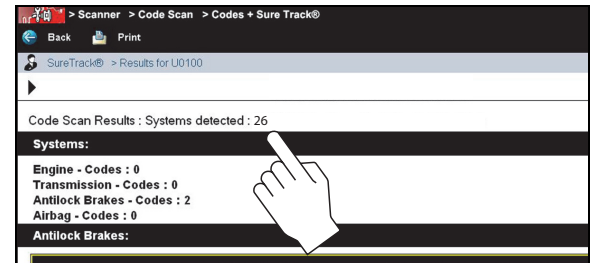


Figure 3

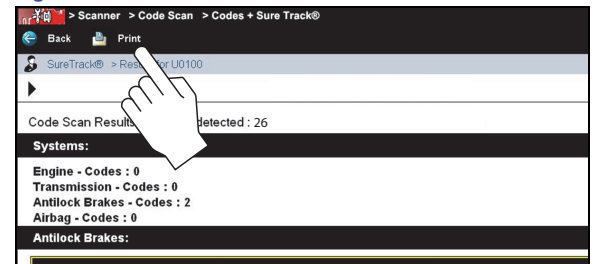
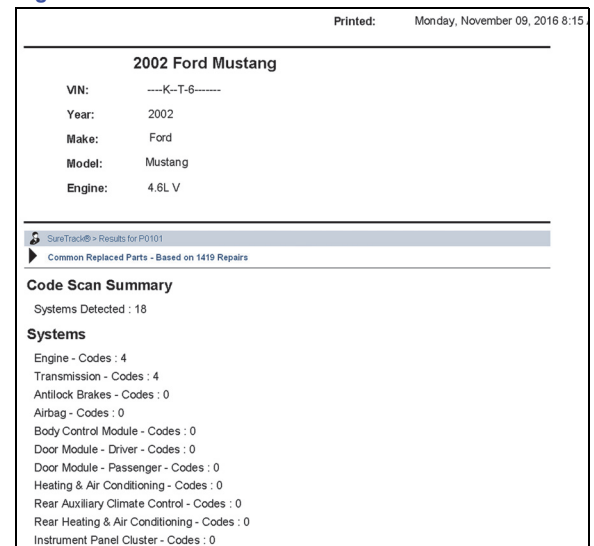


Figure 4



¹ The Code Scan function is dependent upon the vehicle. Not all vehicles may support this function.





VERUS[®] PRO

Code Scan Report (editing/printing)

Customizing Report Output

To personalize the shop information included on the Code Scan Report:

1. From the Home screen select **System Settings**.
2. From the System Settings menu select **Shop Information**.
3. Enter your information in the form fields (**Figure 1**), then select **OK** from the toolbar to confirm the setting.

To hide/show the timestamp (time of day) on the Code Scan Report:

1. From the Home screen select **System Settings**.
2. From the System Settings menu select **Shop Information**.
3. Select the **On/Off** checkbox (**Figure 2**), then select **OK** from the toolbar to confirm the setting.

Before You Print

Before you can print the Code Scan Report you must install a printer, see [Printer Setup](#).

Printing (From Code Scan Screen)

After a code scan has been performed, the Code Scan Report can be directly printed by selecting the **Print** icon from the toolbar (**Figure 3**).

When print is selected, the file (**Figure 4**) is sent directly to the default printer.

Printer Setup

To print the Code Scan Report, a printer must installed and set as the system default printer.

The following is intended as a basic printer setup instruction only. Printer setup will vary. For specific instructions and details, refer to your printer setup information and the online Windows printer setup help information.

Figure 1

Shop Name	
Shop Address	
City, State Zip	
Shop Phone	
Shop Fax	
Slogan	
Comment	
Manager Name	
Manager Title	
Email	
Web Page	

Figure 2

Code Scan Timestamp

On

Off

Figure 3

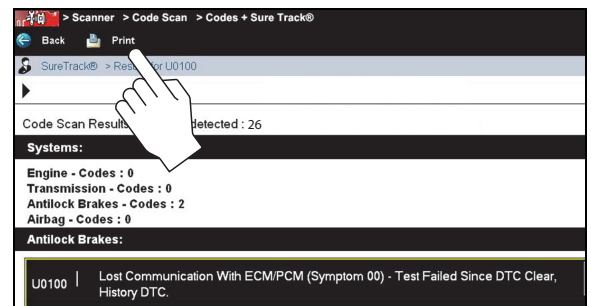
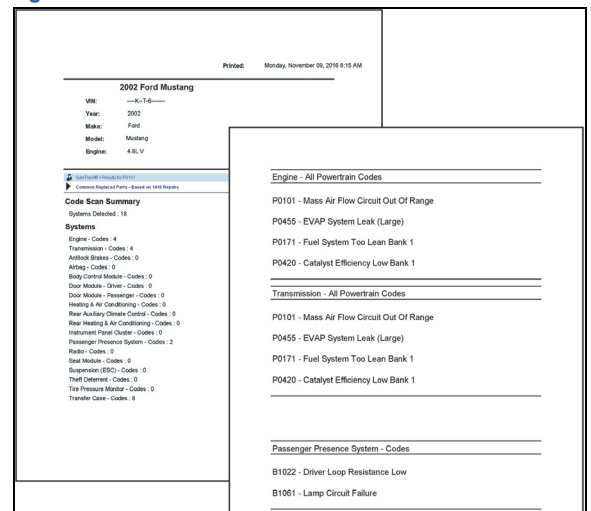


Figure 4



USB Printer Setup

1. Turn the printer on.
2. Connect the USB cable from the printer to the diagnostic tool.
3. Windows should automatically detect and install the printer.
4. Follow the onscreen instructions (**Figure 5**) to install the printer and then set the printer as the default printer, see **Default Printer Setting**.

Note: If the printer driver files are not automatically installed, you will have to manually install the printer driver files. Printer driver files may be supplied with the printer (e.g. CD or memory stick), or check the printer manufacturer's website to download the files. Follow the manufacturer's instructions for driver installation.

Add Printer Wizard (network printer connection)

Use this procedure if you not directly connecting the printer with a USB cable to the diagnostic tool.

1. Turn the printer on.
2. Select **Start** from the Windows desktop.
3. Select **Printers and Faxes** (**Figure 6**) from the systems menu.
4. Select **Add Printer** (**Figure 7**).
The Add Printer Wizard opens.
5. Follow the onscreen instructions to install the printer and then set the printer as the default printer. See **Default Printer Setting**.

Note: If the printer driver files are not automatically installed, you will have to manually install the printer driver files. Printer driver files may be supplied with the printer (e.g. CD or memory stick), or check the printer manufacturer's website to download the files. Follow the manufacturer's instructions for driver installation.

Default Printer Setting

To set a default system printer:

1. Select **Start** from the Windows desktop.
2. Select **Printers and Faxes** (**Figure 5**) from the systems menu (right side).
3. Select (double-click) the printer you want to set as the default printer from the list of installed printers (**Figure 8**).
The printer status window opens.
4. Select **Printer** from the toolbar menu.
5. From the menu, select "**Set as default printer**" (**Figure 8**). When set, a check mark is displayed next to the option.
6. Close the printer status window.

Figure 5

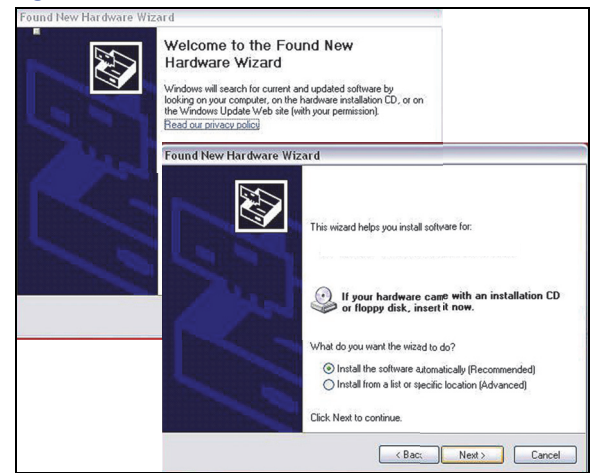


Figure 6

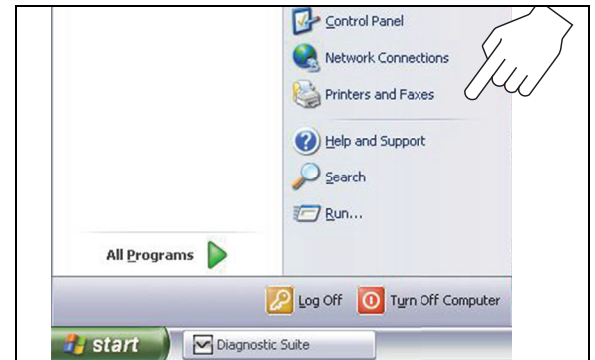


Figure 7

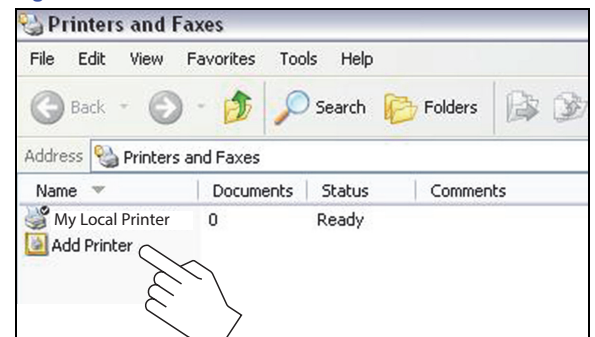


Figure 8

