



ZEUS™ and VERUS® Edge Code Scan with Vehicle System Report (scan/view/print)

Selecting **Code Scan** starts an active scan of vehicle control modules. The scan results are configured into a Vehicle System Report. The report file (PDF) can be copied, attached to an e-mail or printed.

Use Code Scan to Scan Systems¹

Once you have connected and identified a vehicle through Scanner, select **Code Scan** (Figure 1) from the Vehicle System menu to start an active scan of vehicle control modules.

View & Save Code Scan Results

The total number of systems analyzed is actively displayed at the top of the screen (Figure 2). Quick reference indicators are used to show system code status.

To save the code scan as a Vehicle System Report in PDF file format, select **Save** after the code scan has completed. A confirmation message is displayed indicating that the file was saved and its location.

For more information about Code Scan, refer to your diagnostic tool user manual at: diagnostics.snapon.co.uk/usermanuals

Printing the Vehicle System Report

When a code scan is saved, the file is saved as a PDF file in the Vehicle System Report Data Folder within Data Manager.

1. Select **Data Manager** from the Home Screen
2. Select and open the **Vehicle System Report Data Folder** (Figure 3).
3. Select and open the **Vehicle System Report PDF** file from the list.
4. From the PDF viewer use the menu or toolbar print options to print the file (Figure 4).

For more information on printing the report, see the next page.

Figure 1

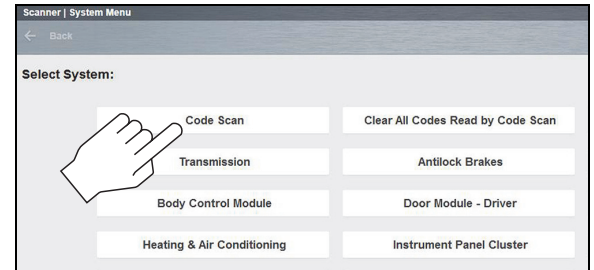


Figure 2

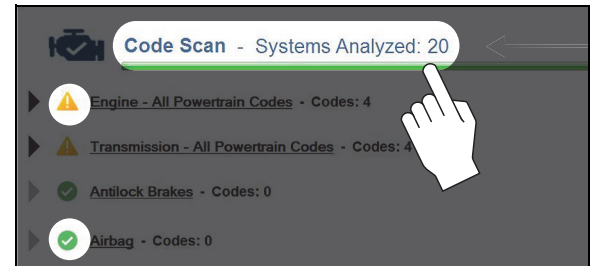


Figure 3

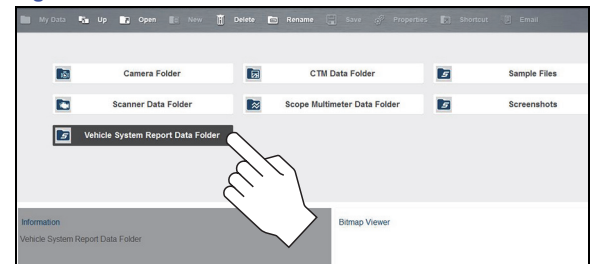
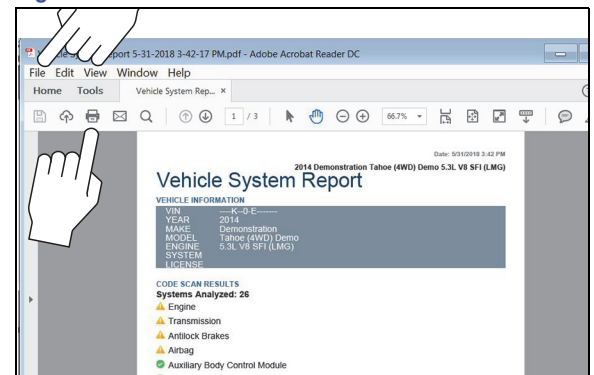


Figure 4



¹ The Code Scan function is dependent upon the vehicle. Not all vehicles may support this function.

Snap-on PRE/POST **SCAN VEHICLE SYSTEM REPORTS** [FIND OUT MORE](#)



ZEUS™ and VERUS® Edge

Vehicle System Report (editing/printing)

Customizing Report Output

To personalize the shop information included on the Code Scan Report:

1. From the Home screen select **System Settings**.
2. From the System Settings menu select **Shop Information**.
3. Enter your information in the form fields ([Figure 1](#)), then select **OK** from the toolbar to confirm the setting.

To hide/show the timestamp (time of day) on the Code Scan Report:

1. From the Home screen select **System Settings**.
2. From the System Settings menu select **Shop Information**.
3. Select the **On/Off** checkbox ([Figure 2](#)), then select **OK** from the toolbar to confirm the setting.

Before You Print

Before you can print the Vehicle System Report you must install a printer and have a current version of Adobe Reader installed.

- To install a printer, see [Printer Setup](#).
- To check and/or install Adobe Reader, see [Checking/Installing Adobe® Reader](#).

The Vehicle System Report may be printed using a few methods, as described in the following sections:

- [Printing \(From Code Scan Screen\)](#)
- [Printing \(From Data Manager\)](#)
- [Printing \(From Vehicle History Record\)](#)

Printing (From Code Scan Screen)

After a code scan has been performed, the Vehicle System Report can be directly printed by selecting the **Print** icon from the toolbar ([Figure 3](#)).

When print is selected, the file is sent directly to the default printer. The file may be displayed momentarily in the PDF viewer and then minimized (this is normal).

Figure 1

Shop Name	
Shop Address	
City, State Zip	
Shop Phone	
Shop Fax	
Slogan	
Comment	
Manager Name	
Manager Title	
Email	
Web Page	

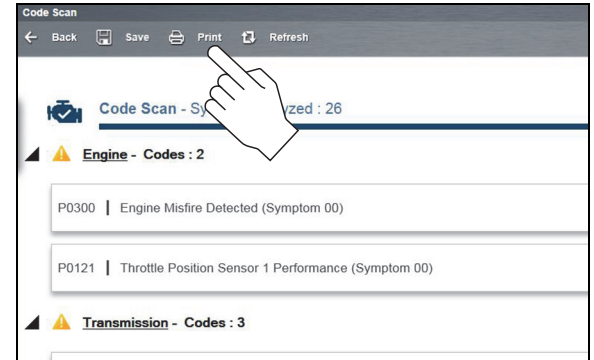
Figure 2

Code Scan Timestamp

On

Off

Figure 3



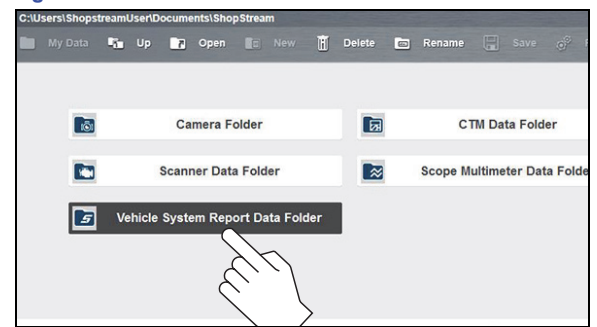
Printing (From Data Manager)

When a code scan is saved, the file is saved as a PDF file in the Vehicle System Report Data Folder within Data Manager.

To print the file from Data Manager:

1. Select **Data Manager** from the Home Screen.
2. Select and open the Vehicle System Report Data Folder (**Figure 4**).
3. Select and open the Vehicle System Report PDF file from the list.
4. From the PDF viewer (**Figure 5**) use the menu or toolbar print options to print the file.

Figure 4



Printing (From Vehicle History Record)

When a code scan is saved, the file is saved as a PDF file in the attachments section of the current Vehicle Record.

To print the file from the Vehicle History Record:

1. Select **Vehicle History** from the Home Screen.
2. Select and open the vehicle record from the list.
3. Select and open the Vehicle System Report PDF file from the attachments box (**Figure 6**).
4. From the PDF viewer (**Figure 5**) use the menu or toolbar print options to print the file.

Figure 5

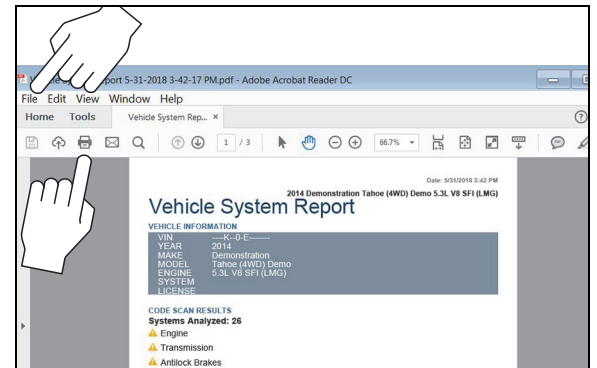
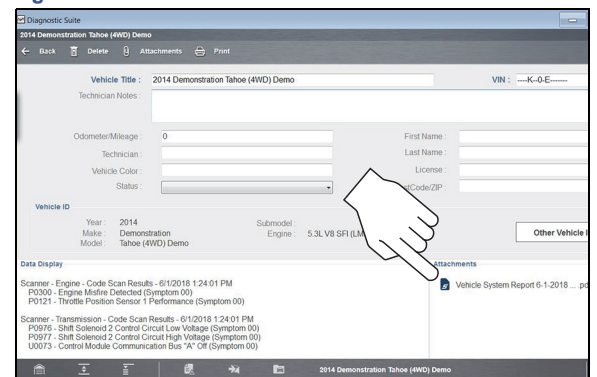


Figure 6



Printer Setup

To print the Vehicle System Report, a printer must be installed and set as the system default printer.

The following is intended as a basic printer setup instruction only. Printer setup will vary. For specific instructions and details, refer to your printer setup information and the online Windows printer setup help information.

There are three basic methods to connect a printer to the diagnostic tool, using a USB cable, connecting over a Wireless Network and Direct Wireless connection. Basic connection instructions are provided in the following sections.

USB Printer Setup

1. Turn the printer on.
2. Connect the USB cable from the printer to the diagnostic tool.
3. Windows should automatically detect and install the printer.
4. Follow the onscreen instructions to install the printer and then set the printer as the default printer, see [Default Printer Setting](#).

Note: If the printer driver files are not automatically installed, you will have to manually install the printer driver files. Printer driver files may be supplied with the printer (e.g. CD or memory stick), or check the printer manufacturer's website to download the files. Follow the manufacturer's instructions for driver installation.

Wireless Printer Setup

If your printer is Wi-Fi enabled, you may have options to connect the diagnostic tool to the printer using an existing Wi-Fi network (through a router), or connect directly to the printer wirelessly.

Connecting to an existing Wi-Fi network is the most common method, as this allows you to connect to the printer and stay connected to the Internet (if applicable).

Note: You may only connect to one network, therefore when connecting directly to your wireless printer, any other active wireless connection will be disconnected.

Wi-Fi Network Connection

Use the following instructions (as a guide) if you choose to connect the diagnostic tool to the printer through your existing network.

1. Turn your printer on and make sure it is setup per the manufacturer's instructions.
2. Connect the printer to your wireless network. A password may be required when connecting to a protected network. Note the printer connection IP address when it connects to the network.
3. From the diagnostic tool, select the **Windows** icon on the desktop (lower left).
4. Select **Devices and Printers** (right-side menu).
5. Select **Add a Printer** from the toolbar.
6. Select **Add Network, Wireless or Bluetooth Printer**.
7. Follow the onscreen instructions to search, locate and install your printer. Windows automatically searches for available printers on the network (**Figure 7**).

Note: If other devices are discovered on the network, connect to the printer with the matching IP address from step 2.

Note: It is important that you install the printer driver files when prompted, during setup. Printer driver files may be supplied with the printer (e.g. CD or memory stick), or check the printer manufacturer's website to download the files.

8. Set the printer as the default printer, see [Default Printer Setting](#).

Direct Wi-Fi Connection

Use the following instructions (as a guide) if your printer supports direct connection, and you choose to connect the diagnostic tool directly to the printer.

1. Turn your printer on and make sure it is setup per the manufacturer's instructions for direct connection. The printer must be able to be wirelessly detected by the diagnostic tool.

Note: You can only connect to one network, therefore when connecting to your wireless printer, any other active wireless connection will be disconnected.

2. From the diagnostic tool, click the Wi-Fi icon in the System Tray (**Figure 8**).
3. Choose your **Wireless Printer** from the list of available networks, then select **Connect** (**Figure 9**).

Figure 7

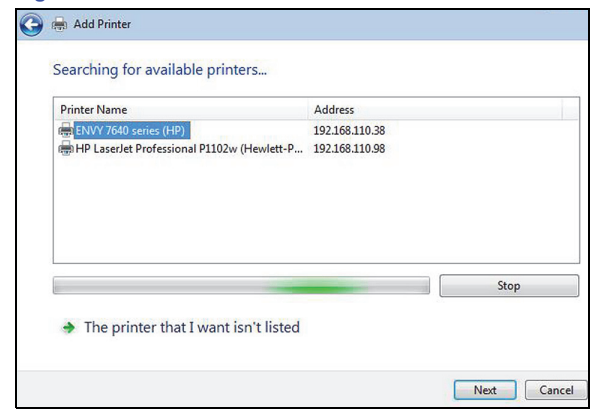


Figure 8

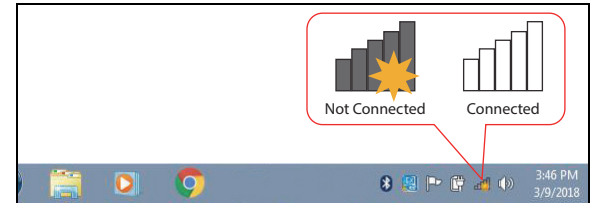
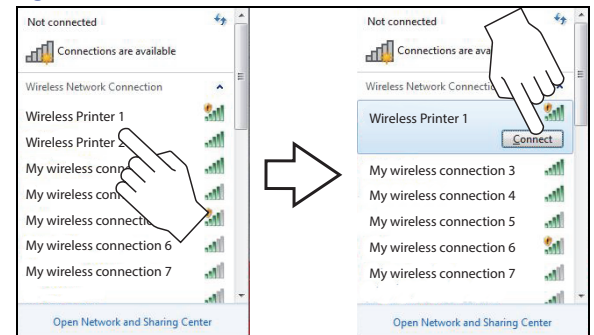


Figure 9



Direct Wi-Fi Connection (Continued)

4. Enter the security password for your wireless printer. See your printer documentation for details.

A wireless network connection progress window displays as the connection is being made.

Once the diagnostic tool is connected to the Wi-Fi printer, follow these steps to install the printer:

5. Select the **Windows** icon on the desktop (lower left).
6. Select **Devices and Printers** (right-side menu).
7. Select **Add a Printer** from the toolbar.
8. Select **Add Network, Wireless or Bluetooth Printer**.
9. Follow the onscreen instructions to search, locate and install your printer. Windows automatically searches for available printers on the network (**Figure 10**).

Note: It is important that you install the printer driver files when prompted, during setup. Printer driver files may be supplied with the printer (e.g. CD or memory stick), or check the printer manufacturer's website to download the files.

10. Set the printer as the default printer, see [Default Printer Setting](#).

Default Printer Setting

To set a default system printer:

1. Select the **Windows** icon on the desktop (lower left).
2. Select **Devices and Printers** (right-side menu).
3. Touch and hold the icon of the printer you want to set as the default, until the optional menu indicator (circle outline) appears (**Figure 11**) and then release (this is also known as right-click menu). From the menu, select **Set as default printer**. When set, a check mark is displayed next to the option (**Figure 11**).

Note: The printer right-click menu, also provides access to other printer settings such as properties and preferences.

Checking/Installing Adobe® Reader

To print the Vehicle System Report, Adobe Reader must be installed.

To check if you have Adobe Reader installed:

1. Check if the Adobe Reader shortcut icon is on the desktop, or
2. Select the Windows icon on the desktop (lower left).
3. Select **All Programs** from the menu.

Adobe Reader should appear near the top of the list (depending on what other software you have installed).

To install Adobe Reader:

1. Visit: www.adobe.com, or www.get.adobe.com/reader/
2. Follow the instructions to download and install the free version of Adobe Reader for Windows.

Note: Deselect any options such as "Install Acrobat Reader Chrome Extension", or install optional security, etc. Only Adobe Reader is needed.

Figure 10

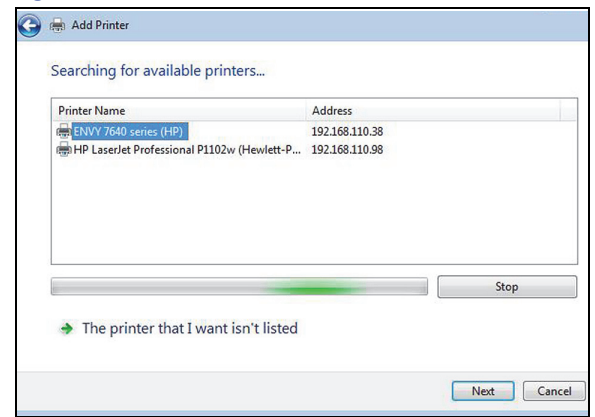


Figure 11

