



The Standard in Information and Diagnostic Systems



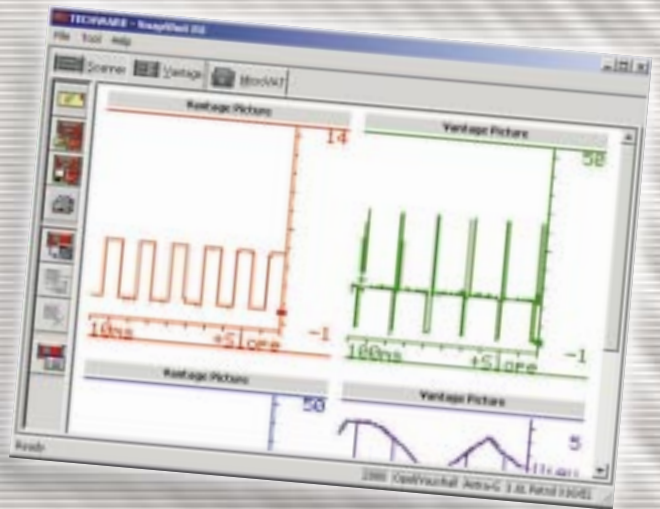
TECHWARETM
Graphical Interface Software

A detailed technical line drawing of an engine, showing various components like the cylinder block, pistons, and valves. The drawing is rendered in a light, semi-transparent style, allowing the background to be visible through it.

flexibility, adaptability, profitability

A technical line drawing of various engine components, including a piston, a valve, and a connecting rod. The drawing is rendered in a light, semi-transparent style, similar to the engine drawing above.

TECHWARE™ is a Windows® based software package designed for technicians who want to link their Sun PDL Scan Tool or Vantage® to a NEXUS or personal computer. Techware has the diagnostic power to display, analyse and save live engine data instantly, as well as being able to recall recorded data for future comparisons. Offering a choice of displays as either values or graphical formats, TechWare provides clear information for technicians to examine, work with, or transmit to the Sun EuroTech Centre for further advice and support.



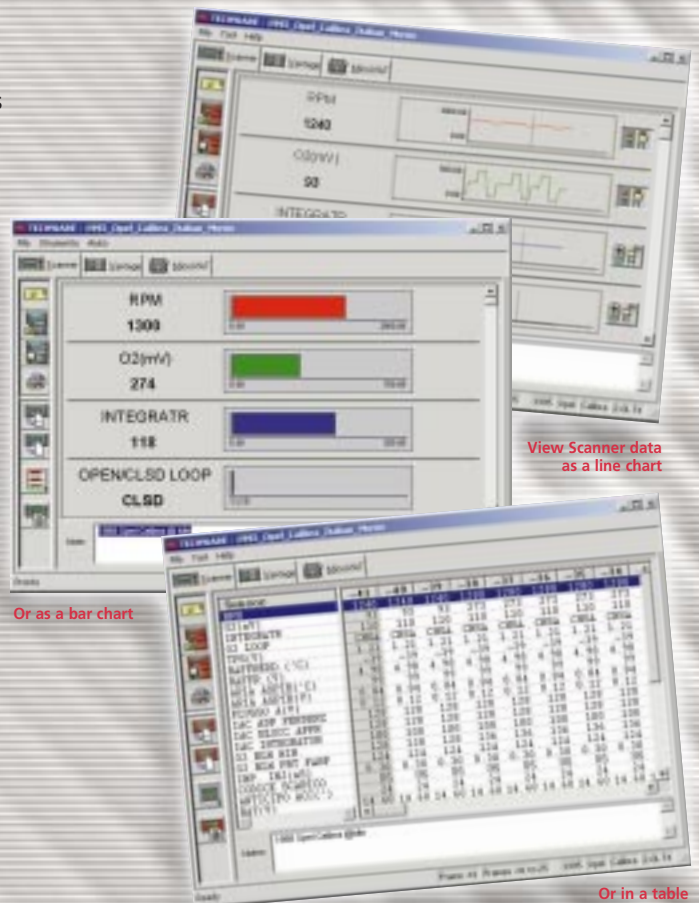
View multiple Vantage screens with ease

Features

- Easy connection of Sun PDL Scan Tool and Vantage to PC
- Powerful parameter data views highlight intermittent faults
- View live data and movies in table or graphical formats
- Save data for later review and reference
- Save snapshots and build a personal knowledge base
- Capture actual PDL screens in VT100 mode
- Print information to present to customers
- Email data direct to the Sun EuroTech Centre for advice and technical support

Configuration

- Compatible with Windows 95, 98, 2000 and NT 4.0
- Installation CD
- Key diskette
- Interface cables
- Installation instructions
- Operators guide



View Scanner data as a line chart

Or as a bar chart

Or in a table

The Standard in Information and Diagnostic Systems



Snap-on Sun Tech Systems
Horsley's Fields King's Lynn Norfolk PE30 5DD
Tel: +44 (0) 1553 692422 Fax: +44 (0) 1553 774682
Email: techsales.uk@snapon.com

Sun Electric Europe
Spaklerweg 69, 1099BB Amsterdam, The Netherlands
Tel: +31 (0) 20 5682 622 Fax: +31 (0) 20 663 0301

www.sun-diagnostics.com

All dimensions and drawings within this publication are a guide only, before carrying out any civil works, always obtain the current installation drawings from the service department. Nothing contained within this publication is intended to extend any warranty or representation, expressed or implied, regarding the products described herein. Any such warranties or other terms or condition of sale of products shall be in accordance with Snap-on/Sun Standard Terms and Conditions of Sale for such products, which are available on request. The manufacturer reserves the right to change or delete models and/or specifications without prior notice. Snap-on and SUN are registered trademarks.